

PART OF S.E. 1/4 OF N.E. 1/4
SECTION 20, T.6N., R.1W., S.L.B. & M.

IN OGDEN CITY
SCALE 1" = 50'

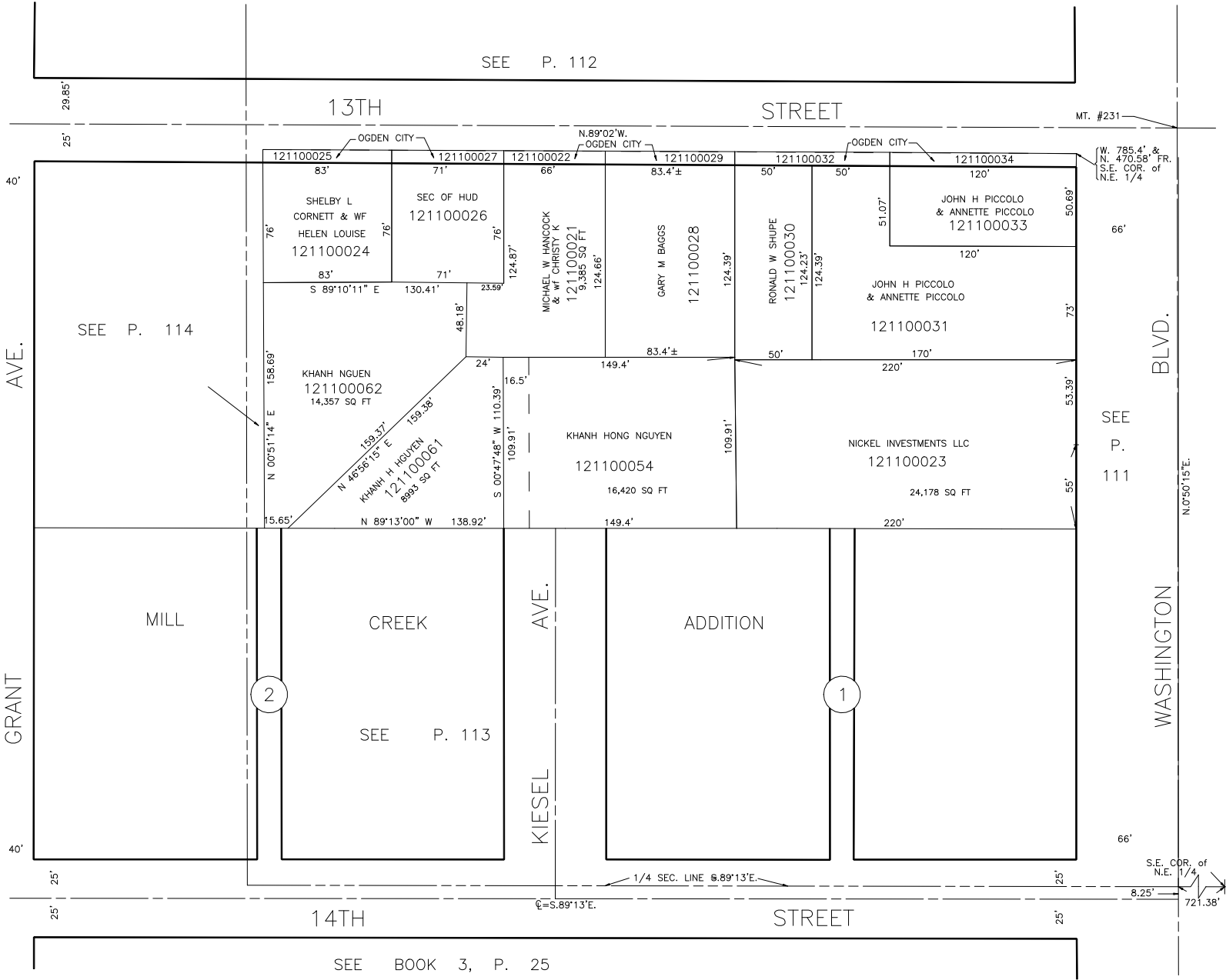
TAXING UNIT: 25

SEE P. 112

13TH

STREET

MT. #231



SEE P. 114

SHELBY L
CORNETT & WF
HELEN LOUISE
121100024

SEC OF HUD
121100026

MICHAEL W HANCOCK
& WF CHRISTY K
121100021
9,385 SQ FT

GARY M BAGGS
121100028

RONALD W SHUPE
121100030

JOHN H PICCOLO
& ANNETTE PICCOLO
121100033

JOHN H PICCOLO
& ANNETTE PICCOLO
121100031

KHANH NGUEN
121100062
14,357 SQ FT

KHANH H NGUYEN
121100061
8993 SQ FT

KHANH HONG NGUYEN
121100054
16,420 SQ FT

NICKEL INVESTMENTS LLC
121100023
24,178 SQ FT

MILL

CREEK

ADDITION

SEE P. 113

2

1

14TH

STREET

SEE BOOK 3, P. 25

(W. 785.4' &
N. 470.58' FR.
S.E. COR.
N.E. 1/4

SEE
P.
111

WASHINGTON
BLVD.

S.E. COR. of
N.E. 1/4
8.25' 721.38'